

EZPFC™

*Simple & Quick Solid Phase Extraction
for Water & Waste Water
PFAS/PFOS/PFOA Analysis*

EZPFC™

Simple & Quick Solid Phase Extraction for Water & Waste Water PFAS/PFOS/PFOA Analysis

With EZPFC you can perform solid phase extractions for 12 samples in less than 50 minutes achieving high recoveries and excellent precision for all analytes.

<i>Simple to Operate</i>	No Computer or Electronics
<i>Fast</i>	Runs 6-12 Samples in 20 ~ 50 min (depending on sample size)
<i>High Throughput</i>	Runs 6-12 Samples in Parallel
<i>Flexible</i>	Uses All SPE Cartridge Sizes
<i>Semi Automated</i>	Vacuum Sample Loading & Valve Selection for Separating Aqueous and Organic Waste
<i>Quality Consumables</i>	Guaranteed Certified Cartridges
<i>Bottle Rinse</i>	Automated Bottle Rinse
<i>In-Line Drying</i>	Nitrogen and Vacuum In-line Drying
<i>Reliable</i>	No Maintenance Required
<i>Zero Cross-Contamination</i>	No Shared Tubing & Fittings

After 30 years of leading automation in the field of Sample Preparation, FMS introduces EZPFC to further simplify the Solid Phase Extraction process and make it easier to perform. The EZPFC's impressive performance allows laboratories to reduce turnaround time and increase quality of the water & waste water analysis while reducing the cost.

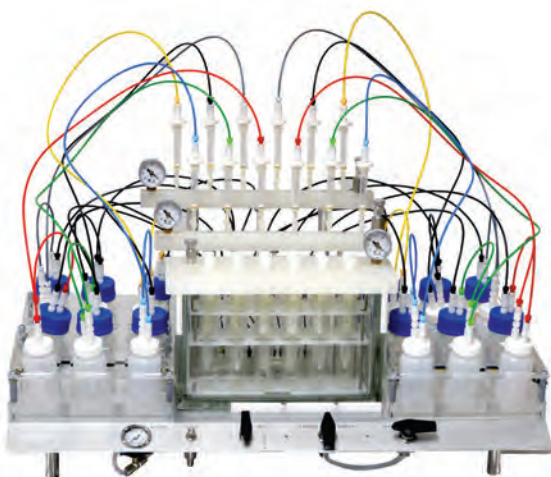
Using vacuum & nitrogen, the EZPFC automatically loads the samples, rinses the sample bottle and delivers the solvent to the SPE cartridges. The final extract is delivered directly to the extract vial ready for final concentration in the FMS SuperVap®. The process saves both labor and time.

Applications:

Drinking Water

Waste Water

Serum

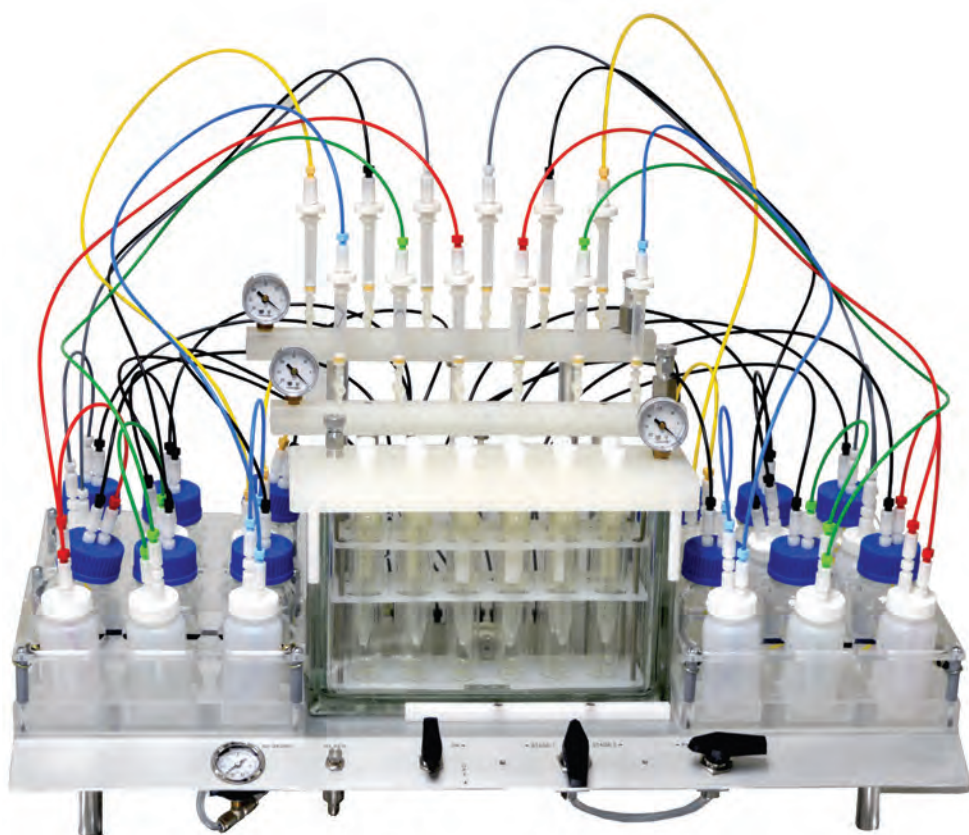


With the EZPFC you can run multi cartridge applications for any SPE PFAS/PFOS/PFOA method requiring more than one cartridge.

The EZPFC system is designed to streamline your laboratory's workflow and increase productivity by automating the manual steps in your sample preparation process. The EZPFC system uses existing manual techniques. EPA Methods 537, 537.1 and other methods for PFAS/PFOS/PFOA call for the extraction and analysis in various matrices. 25 ml cartridges are available for tough samples.

EPA Method 537.1 Recoveries

Compound Name	Average %
PFBS	107
PFHxA	81
HFPO-DA	84
PFHpA	93
PFHxS	95
ADONA	88
PFOA	102
PFOS	101
PFNA	100
9CI-PF3ONS	98
PFDA	118
NMeFOSAA	97
PFUnA	95
NEtFOSAA	105
11CI-PF3OUdS	88
PFDoA	89
SUR_PFHxA	73
SUR_HFPO-DA	81
SUR_PFDA	106



EZPFC

Simple & Quick Solid Phase Extraction for Water & Waste Water Analysis

Supports EPA Methods :

EPA Method 537
EPA Method 537.1
Water Waste

"Direct-to-Vial Concentration"

The SuperVap 24 standalone 15ml tube evaporation/ concentration system is the ideal solution for performing the final evaporation and concentration step. SuperVap® evaporates the extracts which then can be reconstituted and ready for LC/MS analysis.



Patent Pending